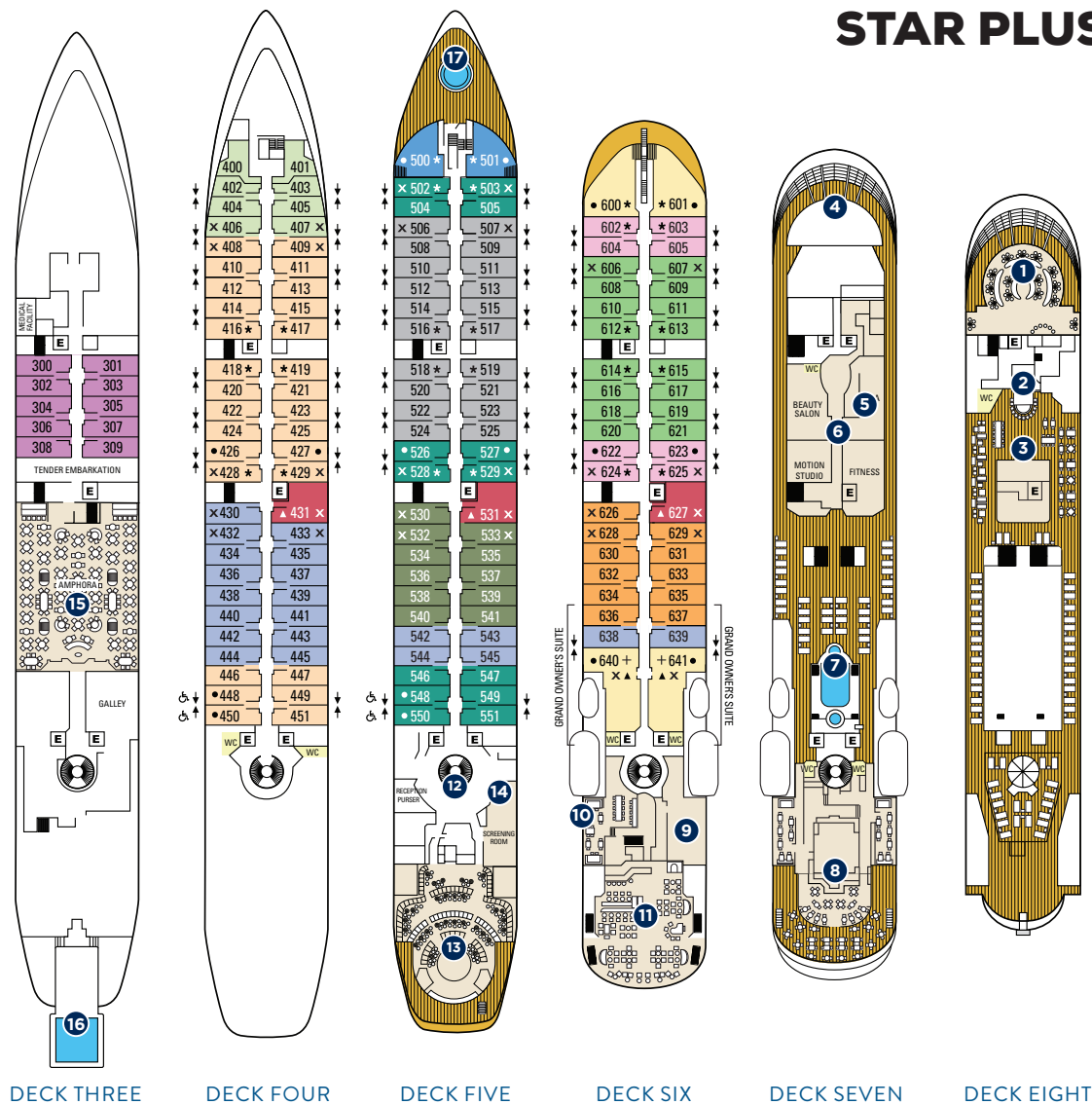


STAR PRIDE, STAR BREEZE, STAR LEGEND

TRANSFORMED BY THE \$250 MILLION STAR PLUS INITIATIVE

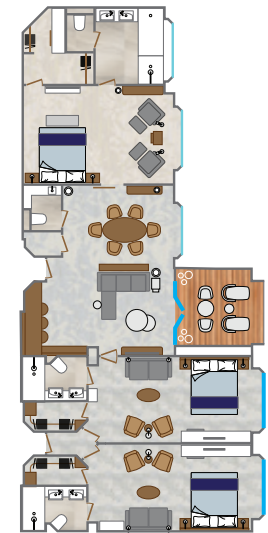


STAR BREEZE
voyages starting
February 20, 2020

STAR LEGEND
voyages starting
July 2, 2020

STAR PRIDE
voyages starting
November 20, 2020

- + RESTRICTED VIEW
 - ↑ ADJOINING SUITES
 - E ELEVATOR
 - * INCLUDES BATHTUB
 - ▲ SEPARATE BATHTUB & SHOWER
 - ONE QUEEN SIZE BED ONLY (no twin option)
 - x 3rd BERTH AVAILABLE
 - ◊ MODIFIED ACCESSIBLE SUITES
- Feature a full-size bed (no twin option)
Suites 448, 450, 548, & 550 are modified accessible, shower only with a small lip into shower, only one sink, a step into the bathroom with a portable ramp, standard interior and exterior doorways.



GRAND OWNER'S SUITE

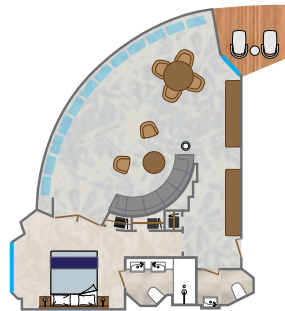
ALL-SUITE SHIPS

Grand Owner's Suites:
3 Bedroom Suites, 640/638/636 or 641/639/637: 1,374 square feet (128 square meters)
Can also be booked as 2 Bedroom Suites, 640/638 or 641/639: 1,097 square feet (102 square meters)

Owner's Suites Midship, 640 and 641 (OW): 820 square feet (76 square meters), both with 3rd berths



OWNER'S SUITE, MIDSHIP



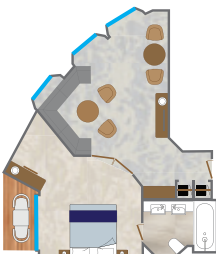
OWNER'S SUITE, FORWARD*

*Star Pride Owner's Suites are slightly different layout with shower only.

Owner's Suites Forward, 600 and 601 (OW): 575 square feet (54 square meters)

Classic Suites, 500 and 501 (CS): 400 square feet (37 square meters)

Deluxe Suites, 431, 531, 627 (DS): 406 square feet (37 square meters), all with 3rd berths. Cabin 431 has two picture windows, excludes balcony



CLASSIC SUITE



DELUXE SUITE



STAR BALCONY SUITE



BALCONY SUITE



STAR OCEAN VIEW SUITE



OCEAN VIEW SUITE



STAR PORTHOLE SUITE

Star Balcony Suites (SBS, SBS1): 277 square feet (26 square meters)

Star Balcony Suites with 3rd berths — 530, 532, 533, 626, 628, 629

Balcony Suites (BS, BS1): 277 square feet (26 square meters)

Balcony Suites with 3rd berths — 506, 507, 606, 607

Star Ocean View Suites (SS1): 277 square feet (26 square meters)

Star Ocean View Suites with 3rd berths — 430, 432, 433

Ocean View Suites (S, S1, S2, S3): 277 square feet (26 square meters)

Ocean View Suites with 3rd berths — 406, 407, 408, 409, 428, 429, 502, 503, 528, 529, 624, 625

Star Porthole Suites (SP): 277 square feet (26 square meters)

ONBOARD SPACES

- | | | |
|----------------------------------|-------------------------------|-------------------------|
| 1 Yacht Club Café & Library | 7 Pool and whirlpool | 14 Screening Room |
| 2 Star Bar | 8 Veranda/Candles | 15 Amphora Restaurant |
| 3 Star Grill by Steven Raichlen | 9 Signature Shop | 16 Watersports Platform |
| 4 Bridge | 10 Cuadro 44 by Anthony Sasso | 17 Whirlpool |
| 5 WindSpa | 11 Compass Rose | E Elevator |
| 6 Fitness Center & Motion Studio | 12 Reception | WC Public Restroom |
| | 13 Lounge | |

- Owner's Suite (OW)
- Classic Suite (CS)
- Deluxe Suite (DS)
- Star Balcony Suite (SBS1)
- Balcony Suite (BS1)
- Star Balcony Suite (SBS)
- Balcony Suite (BS)
- Ocean View Suite (S3)
- Ocean View Suite (S2)
- Star Ocean View Suite (SS1)
- Ocean View Suite (S1)
- Ocean View Suite (S)
- Star Porthole Suite (SP)

SHIP FACTS

GUEST CAPACITY: 312
GUEST DECKS: 6
CREW MEMBERS: 188-190
LENGTH: 522 feet (159 meters)
BEAM: 62 feet (19 meters)
DRAFT: 17.7 feet (5.4 meters)
CRUISING SPEED: 15 knots

PROPULSION: Twin propeller, driven by two Wartsila diesel engines
TONNAGE: 12,995 gross registered tons (grt)
SHIP'S REGISTRY: Bahamas



Veranda

- Access to board ship is via stairs only.
- Access to/from outside deck may require assistance with doors and thresholds.